

SEED Sample Paper 6

1. What is not associated with films?
 - a) Cinemascope
 - b) Silver screen
 - c) Projector
 - d) Launch*

2. Which Italian city is traditionally known as a leading center of automotive design?
 - a) Pisa
 - b) Ferrara
 - c) Venice
 - d) Turin*

3. Which American city was known for being an Automotive manufacturing hub?
 - a) Austin
 - b) Houston
 - c) Boston
 - d) Detroit*

4. What is the meaning associated with image below?



- a) Recycle
- b) Reply*
- c) Replay
- d) Reappear

5. What is the meaning associated with image below?



- a) Proceed
- b) Next
- c) Play*
- d) Forward

6. What is not associated with films?

- a) 70 mm
- b) 35 mm
- c) 18 mm*
- d) None

7. The city of Pune is associated with which historical character?

- a) Mohammad Tughlaq
- b) Ghashiram Kotwal*
- c) Mahadji Bhosle
- d) Raja Kelkar

8. Which of the following is not graphic Design Software?

- a) Gimp
- b) Coreldraw
- c) Adobe Illustrator
- d) VUE*

9. What is in the image?



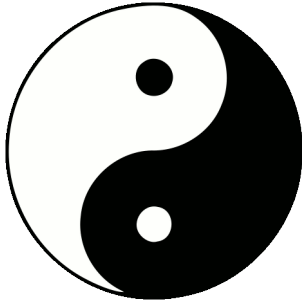
- a) Ashtray
- b) Lighter
- c) Tape dispenser*
- d) Screwdriver

10. What is the product in the image?



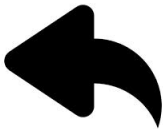
- a) Lighter
- b) Salt and pepper*
- c) Paperweight
- d) Telephone charger

11. Which is the root of the image shown?



- a) China*
- b) Egypt
- c) India
- d) USA

12. What could the image mean?



- a) Recycle
- b) Resend
- c) Reply*
- d) Return

13. Which is not associated with digital music?

- a) Sample
- b) Alpha channel*
- c) Mastering
- d) Mixing

14. Identify the image?



- a) Mayo clinic
- b) Coca cola*
- c) Morgan and Stanley

d) Wall street

15. What is the principle of recording and playback in a cassette player?

- a) Magnetism
- b) Electric magnetism
- c) Electromagnetism*
- d) Electron magnetism

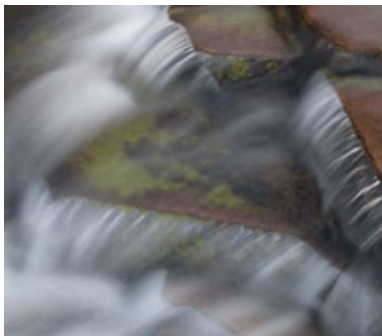
16. What is the name of the technology in cell phones, which allows it to track motion?

- a) Accelerometer*
- b) Transmogrifier
- c) Quad Chip
- d) Antenna

17. The sculpture of David was created by ...

- a) Leonardo Da Vinci
- b) Rafael
- c) Michelangelo*
- d) Mantegna

18. Based on the given image, which option do you think make sense to you?



- a) Cone cells in retina cannot sense water molecules
- b) Human eye is not efficient in seeing water
- c) The given photo is a frozen moment, hence not a real representation of seeing*
- d) Processing the image in brain is slower

19. Which of these doesn't make sense to you?

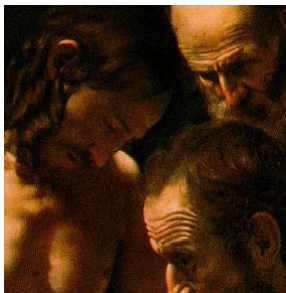
- a) Snakes cannot see
- b) Dogs cannot see red shades
- c) Fish sleeps with eyes open
- d) Bee can see movements in a faster rate than humans*

20. How many shades are there in the picture?



- a) 2
- b) 6
- c) 4*
- d) 3

21. How many light sources are there in the picture?



- a) 3
- b) 1*
- c) 4
- d) 3

22. The given image has a shade range of



- a) Red to yellow*
 - b) Orange to brown
 - c) Black to white
 - d) Red to orange
23. Of the given choices, which is the odd example for vision?
- a) Human
 - b) Dog
 - c) Rabbit
 - d) Snake*
24. Which of the following was a unique feature of sophisticated civilization found in the ruins of the Indus Valley Civilization?
- a) Sculpture
 - b) Concealed plumbing*
 - c) Dockyards
 - d) Fashion
25. Who started the computer company Apple along with Steve Jobs?
- a) John Sculley
 - b) Lee Iacocca
 - c) Steve Wozniak*
 - d) John Powell
26. What was the name of the older script for Marathi, before it was given up for devnagari?
- a) Siddham
 - b) Modi*
 - c) Prakrit

d) Pali

27. If the colour shown is a mix of Blue, Red and Yellow, the values appear to be?



- a) Blue 200% - Red 20% - Yellow 20%
- b) Blue 50% - Red 100% - Yellow 0%
- c) Blue 80% - Red 90% - Yellow 0% *
- d) Blue 0% - Red 60% - Yellow 40%

28. The Measuring Ruler was invented by which Culture?

- a) Mesopotamian
- b) Indus Valley*
- c) Assyrian
- d) Ancient Greece

29. Which one of the following colours would be considered the warmest colour?

- a) Green
- b) Blue
- c) Purple
- d) Yellow*

30. What do you think is not associated with digital storage media?

- a) GB
- b) SD
- c) MB
- d) ML*

31. If the colour shown is a mix of Blue, Red and Yellow, the values appear to be?



- a) Blue 0% - Red 20% - Yellow 10%
- b) Blue 0% - Red 100% - Yellow 20%
- c) Blue 80% - Red 0% - Yellow 80%
- d) Blue 0% - Red 50% - Yellow 80% *

32. What do you think is only associated with moving imagery?

- a) Frames per second*
- b) Resolution
- c) Compress
- d) Export

33. Which of these is not associated with video?

- a) MP4
- b) WMV
- c) JPEG*
- d) WAV

34. Suggest a logical order of the bottles shown?



- a) b-c-a
- b) c-a-b*
- c) a-b-c
- d) c-b-a

35. Raja Ravi Verma was famous for his ...

- a) Lithographs*
- b) Woodcuts
- c) Calligraphy
- d) Bharatnatyam Skills

36. Which Indian Painter used to paint Film posters in his early days?

- a) M.F. Hussain*
- b) Vasudev Gaitonde
- c) Jehangir Sabavala
- d) Amrita Sher Gill

37. Describe the image shown?



- a) Bright areas shown in black
- b) Reverse image
- c) Bright areas are made brighter*
- d) Incorrect image

38. What is represented in the picture?



- a) Lizard
- b) Crocodile
- c) Frog
- d) Snake*

39. Which term would you associate with designing a new product?

- a) Modeling
- b) Prototyping
- c) Sketching
- d) All of the above*

40. Which part of India do you think the shown architecture belongs to?



- a) Punjab
- b) Rajasthan*
- c) Karnataka
- d) Orissa

41. An old computer game: what was the limitation for the jaggy lines?



- a) Screen brightness
- b) Data processing*
- c) Beauty of broken lines
- d) Ignorance

42. How many shades of Green are in the picture?



- a) 5
- b) 3
- c) 8

d) More than 8*

43. Which famous architect is associated with the design of Chandigarh city?

- a) Le Corbusier*
- b) Ludwig Mies Van Der Rohe
- c) Sir John Galt
- d) B. V. Doshi

44. How would you comment on the game screen shown?



- a) Symmetry
- b) Navigational
- c) Explorative
- d) All of the above*

45. Which statement makes more sense?



- a) Expressing through text*
- b) Play
- c) Huge market
- d) Imagination

46. Of the given choices, which is the odd example for interacting with computers?

- a) Touch
- b) Text*
- c) Gesture
- d) Talk

47. Of the given choices, which is the odd example for vision?

- a) House fly*
- b) Human
- c) Dog

d) Cow

48. Which of these is a famous painting by Salvadore Dali?

- a) Jumping Horse
- b) The Vagabond
- c) Persistence of Memory*
- d) The Kiss

49. How will you comment on the furniture?



- a) The frame below is not fitting
- b) Frame below is fitting*
- c) Frame below is not balanced
- d) Frame below is not stable

50. Which is the appropriate description?



- a) Icon of a lens
- b) Sign of progress and magnify*
- c) Icon of mathematics
- d) None

51. Of the given choices, which is associated with Fashion?

- a) Production of raw materials
- b) Retail sales

- c) Advertising
- d) All of the above*

52. Which is the stop traffic sign?



- a) Circle
- b) Octagon*
- c) Triangle
- d) None of the above

53. Which component makes a restaurant appropriate other than food?



- a) Furniture
- b) Ceiling light
- c) Windows
- d) All of the above*

54. The restaurant looks tall in photo. The factor, which makes this assumption, is ...



- a) The window height is not shown*
- b) Tablecloth is white
- c) Number of tables is less
- d) None of the above

55. In this truck painting, what do you observe?



- a) Influence of movies
- b) Influence of nature
- c) Influence of symmetry
- d) All of the above*

56. The first impression of the image shown in terms of human expression ...



- a) Some what happy
- b) Very happy*
- c) Mischievous
- d) None

57. Most important design problem in Hoardings is ...

- a) Too much words*
- b) Too much space
- c) Too much colour
- d) Too big image

58. What is shutter speed in camera?

- a) Duration of holding the click
- b) The speed at which the camera operates in taking a picture
- c) The speed at which the camera captures the light*

d) The speed of taking pictures

59. Choose appropriate comment on the lamp shown?



- a) Mix of materials*
- b) Shade is out of proportion
- c) Height is inappropriate
- d) Bulb is missing

60. What is CD quality sampling in sound recording?

- a) 44.1 KHz*
- b) 88.2 KHz
- c) 22.05 KHz
- d) None of the above